

Utility Provider - REA Energy

CASE STUDY

"WE NOW HAVE BETTER STORM MANAGEMENT, AS WELL AS INCREASED EMPLOYEE SAFETY WITH THE ABILITY TO ACCURATELY TRACK AND MANAGE OUR ENTIRE FLEET."

CHRIS MASTERSON
RELIABILITY SUPERVISOR

Success Outline

The Company

REA Energy is a rural electric cooperative in Indiana, PA who provide reliable electric service for rural residents in Western Pennsylvania, serving approximately 25,000 customers. They operate a large fleet of maintenance trucks to respond to power outages, storm restoration, and regular maintenance.

The Problem

Management has difficulty accurately tracking and managing the location and status of their fleet of maintenance trucks. The unpredictable environment requires a reliable, real-time tracking system for accurate GPS data and rapid storm restoration and outage responses.

The Solution

TruFleet AVL tracking is installed on all maintenance trucks on a Motorola Connect Plus Radio network. The system allows management to track and manage the status of the fleet in real-time on a mapped function display. Integrating seamlessly with the current outage management system TruFleet AVL provides comprehensive reports and search functions to save management time and increase efficiency in responding to power outages, storm restoration, and regular maintenance.

REA energy
Cooperative Inc.

Tallysman
Wireless



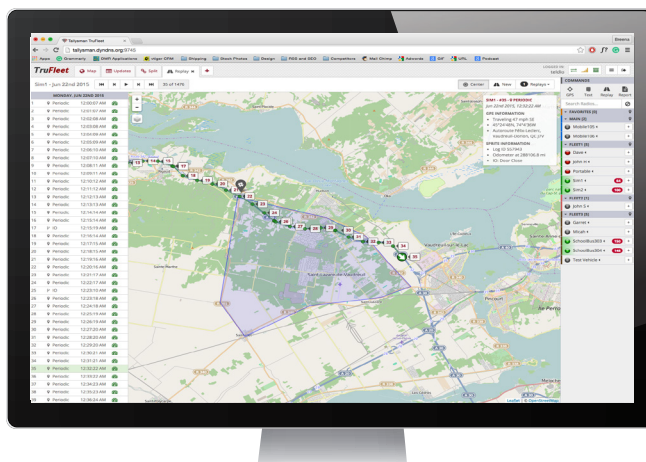
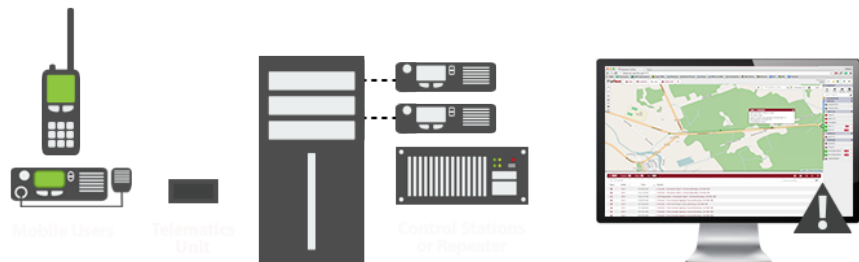
Key Benefits

- Seamlessly integrates with existing outage management system
- Locate vehicles at all times and gain insight into their performance, including vehicle activity, mileage, idle times, maintenance reports, speeding and more.
- Ability to search and replay all historical data based on date and time
- Flexible reporting tool allowing users to generate custom reports with the ability to export
- Easy-to-use interface display allowing users to create points of interests, see historical data and bookmark common locations

Improve Location Tracking & Increase Response Times

An Easy, Intuitive Fleet Management Solution

Tallysman's fleet management solution provides a quick and easy way to track and manage a fleet of vehicles. Within seconds accurate fleet location data is available, including vehicle activity, mileage, idle times, maintenance reports, speeding and more through Trufleet™ AVL. This solution ensures better storm management and employee safety, as management has up to date location data for employees at all times. The solution saves time and increases accuracy through its search and reporting functions. Customer issues can be resolved through a simple search, displaying the exact location and activity of the vehicle in question, increasing employee safety and accountability.



Management can quickly and accurately track their entire fleet of maintenance trucks, along with employees to increase safety and accountability. Easily create points of interests, see historical data and bookmark common locations to identify trends, errors and establish areas of improvement.



WWW.TALLYSMAN.COM | SALES@TALLYSMAN.COM

36 Steacie Drive, Ottawa, ON K2K 2A9 Phone 613.591.3131 x103

Tallysman
Wireless