

TW202



The **connection** of things.®

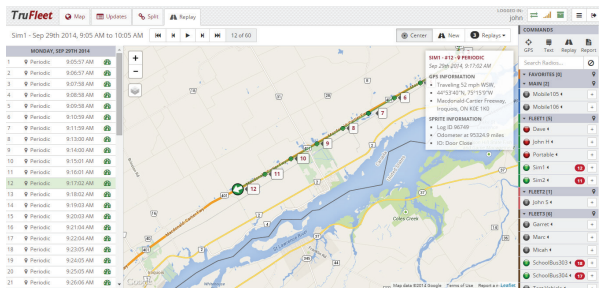
TW202 Sprite™ Asset Tracking Device for Kenwood NEXEDGE

Overview

The Tallysman Sprite™ TW202 “conrail tracking” resolution takes tracking accuracy to a whole new level enabling NEXEDGE™ channel partners to compete on a level playing field with Cellular carrier reporting rates. The TW200 supports all NEXEDGE™ network configurations.

The TW202 conrail tracking coupled with “Event” based reporting of I/O, Odometer, Engine Idle times etc, makes this platform uniquely positioned to meet all Fleet Tracking needs.

Tallysman’s novel data compression can pack in excess of 100 accurate location reports into a single short data transmission. This provides reported location resolution down to a few meters, particularly important for mobile services audits, fuel taxation, and paid services such as garbage collection etc.



Conrail Tracking

The TW202 telematics platform, combined with Tallysman’s TruFleet™ Fleet Management System, radio system operators can significantly increase the number of data users per radio channel. Tallysman’s Fleet Management System manages the high rate location reports and client on-line reports without compromising system performance and provides support for multiple fleets.

Features

- NEXEDGE™ interface
- Out of range logging and retrieval
- Pinpoint tracking & batch reporting
- Push to talk ID (PTT ID)
- Time-OFF-Timer
- 2 COM ports

Benefits

- Increased productivity
- Improved customer service
- Reduced fuel costs
- Eliminate un-authorized vehicle use
- Odometer-based vehicle maintenance records
- Monitor vehicle utilization

TW202 Sprite™

Asset Tracking Device for Kenwood NEXEDGE

Specifications

Ports

- 1 RS232 with control line, or
2 RS232 Ports no control lines
- (TX, RX, Gnd)
- 2 digital inputs, 1 Bi-directional
- Ignition input
- 8 MB Logging memory

Maximum Rating

- 8 to 17 VDC
- 150 mA current typ.
- -40 to +85°C operating temperature
- Input logic: Low0.7 to -5V
- Input logic: High0.8 to 24V

Hardware Interface

- 6 Pin Molex (Power & Inputs)
- RJ45 radio
- RJ45 COM ports
- 1 LED – Power & Status indicator

Connectivity

- NEXEDGE/FleetSync

Mechanical

- Dimensions3.01" L x 2.17" W x 0.65" H (75mm L x 50mm W x 16 mm H)

Ordering Information:

Sprite™ TW202 box with power cable	32-0202-0
Radio cable - for TK7180/8180, NX700/800	27-0016-0
Radio Cable for NX 720-820	27-0096-0
TW20X Configuration cable	27-0017-0

Please refer to the Ordering Guide (<http://www.tallymatics.com/ordering-guide/>) for the current and complete list of available products.



TALLYMATICS®

The **connection** of things.®

Tallymatics manufactures high performance, telematics products and solutions for a wide range of applications. With support for both RF wireless and data networks, Tallymatics enables high-resolution location awareness of mobile field assets across any type of wireless network. Tallymatics is a division of Tallysman.

© 2019 Tallymatics Inc. All rights reserved. Tallymatics, "The connection of things" tag line and the Tallymatics logo are trademarks or registered trademarks of Tallymatics Inc. and/or its affiliates in Canada and certain other countries. All other trademarks mentioned in this document are the property of their respective owners. The information presented is subject to change without notice. Tallysman assumes no responsibility for any errors or omissions in this document. Tallymatics is a division of Tallysman Inc. Tallymatics hereby disclaims any or all warranties and liabilities of any kind.

Contact us:
info@tallymatics.com
T: +1 613 591-3131

Tallymatics Inc.
36 Steacie Drive,
Ottawa ON
K2K 2A9 Canada

www.tallymatics.com